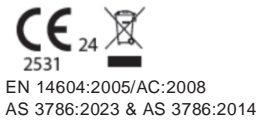


Interconnected Photoelectric Smoke Alarm  
User manual  
Model: JKD-518R



Thank you for purchasing this Smoke Alarm.  
This instruction manual contains important information on starting operation and using the device. Store this manual in a safe place for future reference.  
The instruction manual is a part of the device – bear this in mind if you pass on this device to others.  
Please take a few minutes to thoroughly read the manual and familiarize yourself and your family with its operation.  
This installation and testing are in accordance with current standard AS3786.

Table of Contents

- 1. What to do if the Smoke Alarm Sounds
- 2. Important Product Information
- 3. Installation Instructions
- 4. Understanding your Smoke Alarm
- 5. General Maintenance
- 6. Battery Information
- 7. Product Specifications
- 8. How to Set up and Interconnect Wireless Alarms
- 9. Manufacturer Information

1. What to do if the Smoke Alarm Sounds

Smoke alarm pattern is three long beeps, repeating every 2 seconds. the ALARM indicator(red) will flash the same pattern.  
**What to do in case of fire.**  
1). Do not be panic, stay calm.  
2). Evacuate the building as quickly as possible. Quickly touch door handles to feel if they are hot before opening. Use an alternate exit if necessary. Crawl along the floor; do not stop to collect anything.  
3). Gather at the designated safe meeting place outside the building and stay there until given further instructions by authorities.  
4). Call the fire department from outside the building and wait for them to arrive.  
5). Never go back inside a burning building.

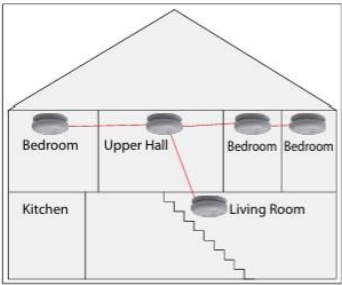
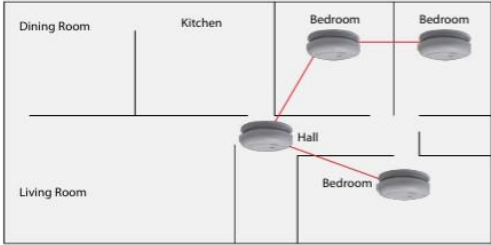
2. Important Product Information

**CAUTION!** -This device is to be installed by a competent person.  
**WARNING!** - Do NOT tamper with or repair this device, as warranty is immediately void and the likely risk of malfunction occurring.  
1). The TEST/HUSH button accurately tests the device functions. Do not use any other test method. Test the device monthly to ensure proper operation.  
2). If you're sure it's not really an alarm, use the HUSH button on the remote, alternatively open windows or fan the air around the device to silence it.  
3). This Smoke alarm is designed solely for use in a single occupancy dwelling. In multi occupancy buildings, each individual occupancy shall have its own interconnected smoke alarm devices. This device is not a substitute for a complete alarm system.  
4). A competent person is to install Smoke alarms in accordance with the diagram and in compliance to Australian Regulations. This Smoke alarm is designed to detect a fire in the area or room in which it is installed.  
5). In these circumstances, Smoke may not make it to the unit alarm QUICKLY ENOUGH to ensure safe escape.

6). This Smoke alarm has limitations. Whilst this is a quality product, the device is not completely fail safe and is not warranted to protect lives or property from fire. Smoke alarms are not a substitute for insurance. Homeowners and renters should insure their lives and property. In addition, it is possible for the device to fail at any time. For this reason, you must test the device frequently and replace unit every 10 years.

3. Installation Instructions

**WARNING!** - To avoid injury, this device is to be securely attached to the ceiling/wall in accordance with the installation instructions.  
**3.1 The broad locations for alarms in sole occupancy dwellings are shown below**



3.2 The prescribed locations for installing smoke alarms

Where practicable smoke alarms must be placed on the ceiling.  
Smoke alarms must **not** be placed:  
i) within 300mm of a corner of a ceiling and a wall;  
ii) within 300mm of a light fitting;  
iii) within 400mm of an air-conditioning vent; or  
iv) within 400mm of the blades of a ceiling fan.  
If your installation is different to the diagrams and also to ensure correct installation locations, double check the website of your local authority.

3.3 Installation instructions

**CAUTION!** -This device is to be installed by a competent person.  
Attach the bracket to the plastic plugs (or use screw dogs as applicable) and fix tightly the screws into the plastic plugs.  
Do NOT over-tighten screws.

3.4 Further connection instructions

Toggle the switch on the back to the On position to power on the device. Turn clockwise to install the alarm to the mounting plate.

Rotate clockwise for installation / Rotate counter clockwise for un-installation.

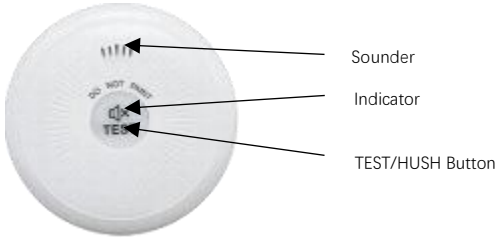


**CAUTION!** -This Smoke alarm **MUST** be installed on the matching bracket.

**WARNING!** – If the switch is in the OFF position, the alarm cannot be mounted on the plate properly! You cannot install the alarm to the mounting plate unless it's in the ON position first.

4. Understanding your Smoke Alarm

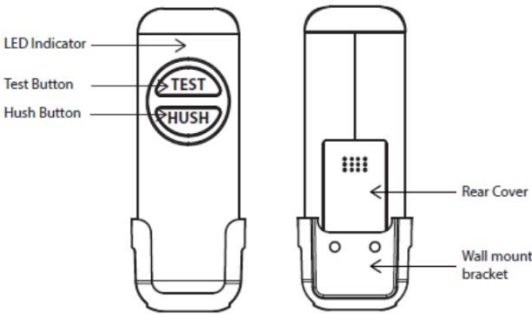
4.1 Overview of smoke alarm



- 1). POWER indicator(red)  
The red indicator flashes every 40 seconds to indicate it is normal operation.
- 2). ALARM indicator (red)  
The red indicator is used to indicate alarm status of the smoke alarm.
- 3). TEST/HUSH button  
Use your remote to achieve this or the TEST/HUSH button may be used to test the device and to HUSH(SILENCE) the unit during a smoke alarm. Press and hold to enable TEST function, or press to enable HUSH(SILENCE) function when alarm.
- 4). Sounder  
The sounder is used to send out smoke alarm warning and abnormal warning information.

4.2 Overview of wireless remote controller

- 1). The hand-held wireless remote control is an optional device that is compatible with the wireless interconnected smoke alarms. It is sold separately, or is included with the smoke alarm pack bundle.
- 2). The remote controller is powered by 2pcs DC1.5V AAA batteries (Included).



Remote operation and indicators

- 1). Press TEST button, LED indicator(red) stays lit.
- 2). Press and hold the TEST button for over 3 seconds, then release to cancel the TEST mode; LED indicator(red) flashes.
- 3). Press the HUSH button, LED indicator(red) flashes.
- 4). When the battery is low, LED indicator(red) flashes three times (cycle: 1s on, 1s off)

4.3 Operation and testing

- 1). **Start up**  
After sliding the switch to the ON position, the red light will flash one time and the device confirms start-up with a beep.
- 2). **Normal operation**  
The POWER indicator(red) flashes every 40 seconds.

3). Low battery voltage warning

If the device chirps once every 40 seconds, the FAULT indicator (red) will flash once every 40 seconds, indicating the battery is low and the **unit is to be replaced, as soon as possible, to ensure your protection.**

4). Smoke alarm

When the smoke alarm detects a dangerous level of smoke, the device will emit a smoke alarm pattern. The smoke alarm signal pattern is 3 beeps followed by 2 seconds of silence. This cycle repeats as long as a dangerous smoke condition exists. The ALARM indicator(red) will flash in the same pattern. This signal will be repeated until dissipation of the smoke or the alarm signal is manually silenced.

**CAUTION!** -Refer to "1. What to do if the smoke alarm sounds" when you hear the sounds of the smoke alarm warning.

**DANGER!** -If the smoke alarm sounds, and it is not being tested, it means the unit is sensing smoke, THE SOUND OF THE ALARM REQUIRES YOUR IMMEDIATE ATTENTION AND ACTION.

When one smoke alarm detects the smoke and goes off, all interconnected smoke alarms will sound simultaneously. And only the one detected the smoke, the ALARM indicator(red) will be flashing.

5). HUSH(SILENCE) Smoke alarm

When the device is in smoke alarm mode, push the TEST/HUSH button on the alarm, and the alarm sound will be paused for approx. 10 minutes.

The ALARM indicator(red) will keep flashing in the smoke alarm mode, which indicates the device is running into the smoke alarm silence mode. This Smoke alarm is designed to minimize nuisance alarms.

When you press the TEST/HUSH button on one of the interconnected smoke alarms, all alarms will be hushed(silenced). If one alarm is still beeping, it is the initial alarm that detected the actual smoke. This feature helps you quickly identify the floor or room where the fire hazard is present.

If you are using an optional remote controller, it is the best way to press the HUSH button on the remote, all alarms will be hushed except for the one detecting real smoke.

The silence feature is to be used only when a known alarm condition, such as smoke from cooking activates the alarm. The smoke alarm silence (smoke alarm silence mode) can be repeated until the air has been cleared of the condition causing the alarm. CAUTION! -Before using the smoke alarm hush(silence), identify the source of the smoke and be certain a safe condition exists.

6). **Test the device**  
After initial installation, test each smoke alarm to ensure it is operating properly.  
To test the device, press the TEST/HUSH button, you will then hear the alarm sound patterns, with corresponding (red) flashes, seen from the ALARM indicator. And all other smoke alarms in one interconnected group will sound too.  
**WARNING!** -Due to the loudness (85 decibels) of the alarm, always stand an arms-length away from the unit when testing. This is simply avoided by using the remote control at a distance.  
**NOTE:** Test the unit frequently! Should your unit not perform as described, replace it immediately.

If you are using an optional remote controller, point it in the direction of the alarm, and press the TEST button on the remote, all interconnected alarms will sound.

**4.4 Trouble shooting**  
**CAUTION!** -Do NOT tamper with or repair this device, as warranty is immediately void and the likely risk of malfunction occurring. If the device is not operating correctly, is still under warranty, then contact SEMS, who will troubleshoot an amicable outcome with you. Should the warranty have expired, then contact SEMS to order another comparable alarm and replace it as soon as practicable.

| Table 4.4 Trouble shooting guide:                     |   |
|---|---|
| Problem   | Method of disposal  |
| The device does not sound when press TEST/HUSH button | 1. The device is power of.<br>2. The device is under "Smoke alarm silence" or "Low battery voltage warning silence" or "Fault warning" mode. Please ensure the device is under "Normal operation" mode then test the device.<br>3. Clean the device. Please refer to the "5. General maintenance".<br>4. If there are still failures during warranty, contact SEMS.<br>5. If the unit is out of warranty, contact SEMS to order another comparable alarm. |

|  |  |
|--|--|
| The device chirps once with red light flashes once every 40 seconds                | LOW BATTERY VOLTAGE SIGNAL.<br>The battery is under low battery status, please replace the device. |
| The device sounds unwanted alarms when residents are cooking, taking showers, etc. | 1. Press TEST/HUSH button to pause alarm.<br>2. Clean the smoke around the device.                 |

**5. General Maintenance**  
To keep your Smoke alarm in good working order, please follow these simple steps:  
1). Verify the unit's alarm sound and indictors operation by enable the TEST/HUSH button once a week.  
2). Remove the unit from the ceiling and clean the alarm cover and vents with a soft brush attachment once a month to remove dust and dirt.  
3). Never use detergents or other solvents to clean the unit.  
4). Avoid spraying air fresheners, hair spray, or other aerosols near the device.  
5). Never attempt to disassemble the unit or clean inside. this action will void your warranty.  
6). As soon as possible, place the Smoke alarm back in its proper location to assure continuous protection from fire.  
7). When household cleaning supplies or similar contaminants are used, the area should be ventilated.  
**WARNING!** -Your Smoke alarm will not be operational and will not monitor for smoke levels when the battery is not activated.

**6. Battery Information**  
**6.1 Battery type**  
This device is powered by 2pcs built-in DC 3.0V CR123A Lithium batteries (non-replaceable). Once activated, the battery will supply power to the alarm for 10 years under normal operation conditions.  
**NOTE:** Battery activate is necessary for the life of the device.  
**NOTE:** Constant exposure to high or low humidity may reduce battery life.

**6.2 Battery deactivation**  
This device is equipped with low battery monitor circuit which will cause the alarm to produce chirps once and blink the FAULT indictor (red) every 40 seconds. You must replace a new device asap after the first occurrence of the "Low battery warning" to provide continuous alarm protection.

**6.3 Battery disposal**  
**WARNING!** - Fire, explosion, and severe burn hazard. Do not recharge, crush, disassemble, heat above 100 °C, incinerate or expose to water.  
1). Take battery to nearest B-cycle drop off points.  
2). Do not dispose of battery (or the device) as unsorted municipal waste, but collect it separately.  
3). Please dispose of in accordance with all applicable federal, state and local regulations.

**7. Product Specifications**  
Model: JKD-518R  
Software version number: V1.0  
Communication protocol: RF433MHz  
Frequency and max power: 433.92 MHz @ -14.96 dBm  
Transmission Range: over 100m in open area  
Product standards: EN 14604:2005/AC:2008 AS 3786:2023 & AS 3786:2014  
Power Supply: 2pcs 3.0V CR123A lithium battery  
Sensor of Smoke: Photoelectric reflection  
Smoke Alarm Sensitivity: 0.25dB/m  
Smoke alarm silence: about 10 minutes  
Product life: 10 years  
Standby Current: <50µA (average)  
Alarm Current: <70mA (average)  
Operation Ambient Condition: -10 °C~+50 °C, <95%RH non-condensing  
Storage/Transport Condition: -10 °C~+50 °C, <95%RH non-condensing  
Alarm sound: ≥85dB at 3m  
Installation Location: Ceiling or wall  
Detection range: Max. 40m<sup>2</sup> within a room.  
Size: about Φ115\*33mm  
Weight: 180±10g (net)

**8. How to Set up and Interconnect Wireless Alarms**  
These wireless interconnected alarms contain a built-in RF module enabling you to wirelessly connect 2 or more interconnected alarms to create an interconnected network. When one unit is triggered, all interconnected alarms will sound.

**8.1 How to create an interconnected network**  
**Step 1:** Quickly press the TEST button 5 times on one of these alarms, the green light flashes rapidly, indicating it has entered into the transmitting mode (valid time: 120 seconds, in this state, hold the button down for 5 seconds to exit the transmitting mode, otherwise, the system automatically exits this mode after 120 seconds).  
**Step 2:** Press the TEST button 3 times on the other alarms, the green light flashes rapidly, indicating it has entered into the receiving mode.  
-----If pairing is successful: the green LED of these alarms will stop flashing, and the buzzer will "beep" one time.  
-----When it is a failure, the green LED will continue to flash for 120 seconds, and then exit the learning mode.  
**If you want to connect more units to this group, simply repeat step 1 and step 2.**  
After all units are interconnected and enter into standby mode, test the alarms according to the steps in the section "Interconnected Alarm Test".

**NOTE**-using remote controller as transmitter  
If you have an optional remote controller together with these wireless alarms, it is the best way to pair all the alarms using the remote controller as transmitter.  
**Step 1:** Simultaneously press and hold the TEST and HUSH buttons on the remote over 3 seconds, its red LED indicator will flash quickly, indicating that it is searching for the devices to connect to (valid time: 120 seconds, in this state, press any button to exit the transmitting mode, otherwise, the system automatically exits this mode after 120 seconds).  
**Step 2:** Press the TEST button 3 times on all wireless smoke alarms, the green light flashes rapidly, indicating it has entered into the receiving mode. Others are the same as above item 2.

**8.2 How to Disconnect the Alarms**  
Press the TEST button 3 times on the alarms, the green light flashes rapidly, then hold the button down (approx. 5 seconds) until it beeps once to disconnect. After disconnecting, it can be reconnected to the same network, or added to a new network.  
**NOTES**  
1). A maximum of 30 alarms can be interconnected.  
2). Test all wireless alarms to ensure they are interconnected before installation.  
3). The model cannot communicate with wireless interconnected alarms from other manufactures.

**8.3 Interconnected Alarm Test**  
If your device is interconnected to other wireless alarms, we recommend each individual alarm is tested during the frequent scheduled testing.

Using the remote controller is the best way to test all interconnected alarms. Press the Test button on the remote, its red LED indicator stays lit, and all interconnected smoke alarms will sound. After testing, the alarms will automatically enter standby mode.

When these interconnected smoke alarms are in Test mode and keep sounding, press and hold the Test button on the remote for more than 3 seconds to exit the Test mode. When the smoke alarms receive the signal, they will stop sounding.

**8.4 Interconnected HUSH(SILENCE) Mode**  
If you press the HUSH(SILENCE) button during an alarm state, the unit will be in the silence mode for 10 minutes. During the silence mode, the LED will flash continuously, the alarms will enter the normal mode after 10 minutes.

**REALLY IMPORTANT INFORMATIVE NOTES**  
1). You can hush(silence) all interconnected units by pressing the test/hush button on one of the alarms. **If one unit is still alarming, it is the initiating alarm (the unit that originally detected the smoke); to silence all connected units, you must also press the test/hush button for the initiating alarm.**  
2). In the interconnected mode, the initiating alarm cannot be triggered again during the silence duration. However, all other interconnected alarms will be temporarily hushed(silenced) and enter standby mode, and will alert again if they detect dangerous target levels.

**9. Manufacturer Information:**  
SJT C/- Australian Distributor:-  
SEMS (Specialised Electrical and Mechanical Services)  
PO Box 376 Lutwyche Brisbane Queensland 4030  
Email:- infosems@specialisedelectricalms.com